



Product Name	Dimensions	Number	Statement
Dome Light DM30	Widht: 323 mm	1	Lighting Zone
	Heigh: 155 mm	2	Product
		3	Camera Field of View

1.FEATURES

- Illumination Color: 6500K
- Illumination Angle: 85°
- Light Intensity: 2.56 k lm
- Number of Leds: 30
- Input Voltage: 24 V
- Input Current (15 μ s): 4,84 A
- Input Current (1 second): 3,22 A
- Input Current (1 minute): 2,69 A
- Input Current (continuous): 2,07 A
- Constant Voltage Usage: Yes
- Diffuser Option: Yes

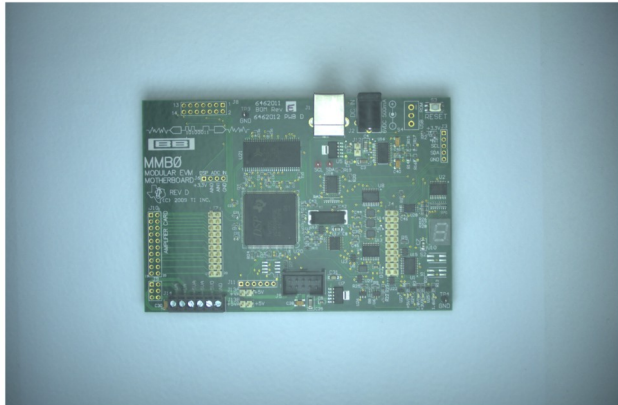
3.APPLICATIONS

- Engine Part Inspections
- Packaging Inspections
- Medical Bottle Inspections
- Food Package Inspections
- Surface Inspections
- Microscopic Camera Applications
- Particle Imaging in Liquid
- Particle Size Measurement
- Particle Counting
- Machine Vision
- Cell Identification
- Flame Length Measurement
- Edge Detection
- Material Strain Measurement (elongation / shortening / degradation)
- Motion Detection
- Product Counting
- Color Concentration Information
- Coordinate Information

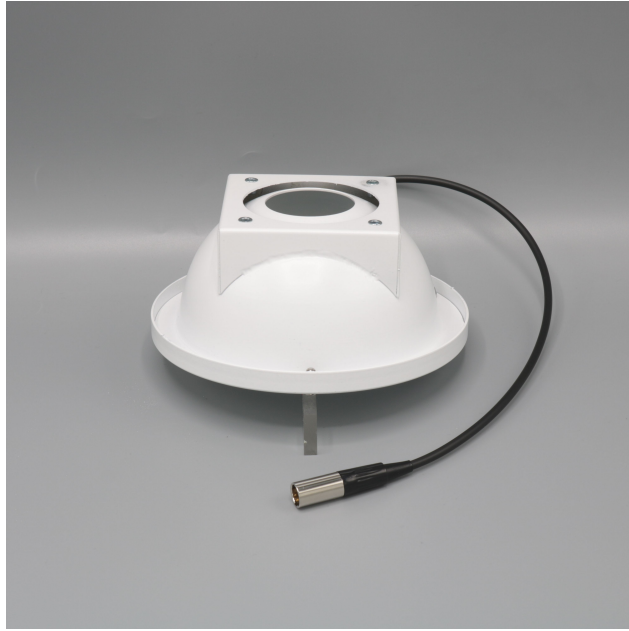
2.DESCRPTIONS

- Dome lighting is created by arranging numerous light sources in a hemispherical structure. This setup ensures that light comes from all directions, minimizing issues caused by shadows and reflections

- Particle Identification
- Cell Imaging
- Machine Monitoring
- Image Processing
- Industrial Led Lighting
- Conveyor Line Lighting
- Robot Vision Applications
- Industry 4.0 Applications
- Machine Lighting
- Bar Light
- Dark Field Light
- Panel Lighting
- Dark Effect Lighting
- Dome Light
- Ring Light
- Panel Light
- Back Light
- Dome Type
- Lighting



4.PRODUCT USE



Mounting to the machines is possible with the bolt and nut assembly in the areas indicated in the adjacent image.

The points to be taken into consideration during this installation are as follows: The electronic parts should not be contacted while assembling the product.

In addition, if the product is not installed properly, vibrations that may occur will cause errors during measurement and control.



The product consists of a 30 cm long bracket fixed on it.

It is reinforced with a plug-in cable.

Cuts, breaks, etc. in the cable. If you experience any problems, please contact us before using the product.

5.DIMENSIONS

