

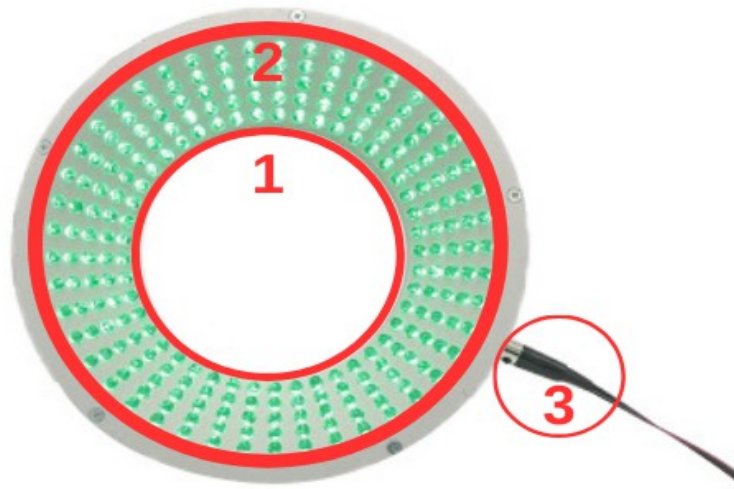


# Prion Industrial Lighting

Dark Field Lights

High Angle Lights

DFX1



Product Name	Dimensions	Number	Statement
L4040	Width: 264 mm	1	Camera Zone
	Height: 77 mm	2	Lighting Zone
	Length: 25 mm	3	Product Cable





# Prion Industrial Lighting

## Dark Field Lights

## High Angle Lights

DFX1

### 1.FEATURES

- Lighting Color: Green
- Lighting Angle: 30°
- Intensity Of Illumination:0,4 lm
- Led Number: 225
- Input Voltage: 24 V
- Input Current (15  $\mu$ s) : 1,1 A
- Input Current (1 second): 0,72 A
- Input Current (1 minute): 0,58 A
- Input Current (continuous): 0,45A
- Dimensions: 26,4 cm x 7,7 cm x 2,5 cm
- At Constant Voltage Operation: Have
- Diffusor Option: There Are

### 3.APPLICATIONS

- Engine Part Inspections
- Packaging Inspections
- Medical Bottle Inspections
- Food Package Inspections
- Surface Inspections
- Microscopic Camera Applications
- Particle Imaging in Liquid
- Particle Size Measurement
- Particle Counting
- Machine Vision
- Cell Identification
- Flame Length Measurement
- Edge Detection
- Material Strain Measurement (elongation / shortening / degradation)
- Motion Detection
- Product Counting
- Color Concentration Information
- Coordinate Information

### 2.DESCRPTIONS

- High Angle lighting is another specialized illumination technique used in image processing projects. In this technique, the light source is directed at a high angle towards the object, providing various advantages.
- Particle Identification
- Cell Imaging
- Machine Monitoring
- Image Processing
- Industrial Led Lighting
- Conveyor Line Lighting
- Robot Vision Applications
- Industry 4.0 Applications
- Machine Lighting
- Bar Light
- Dark Field Light
- Panel Lighting
- Dark Effect Lighting
- Dome Light
- Ring Light
- Panel Light
- Back Light
- Dome Type
- Lighting





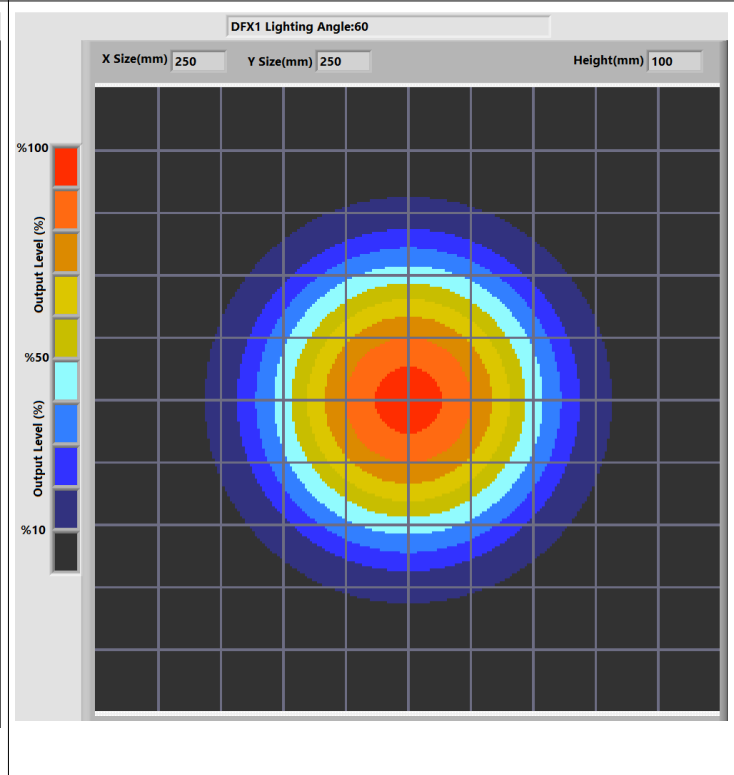
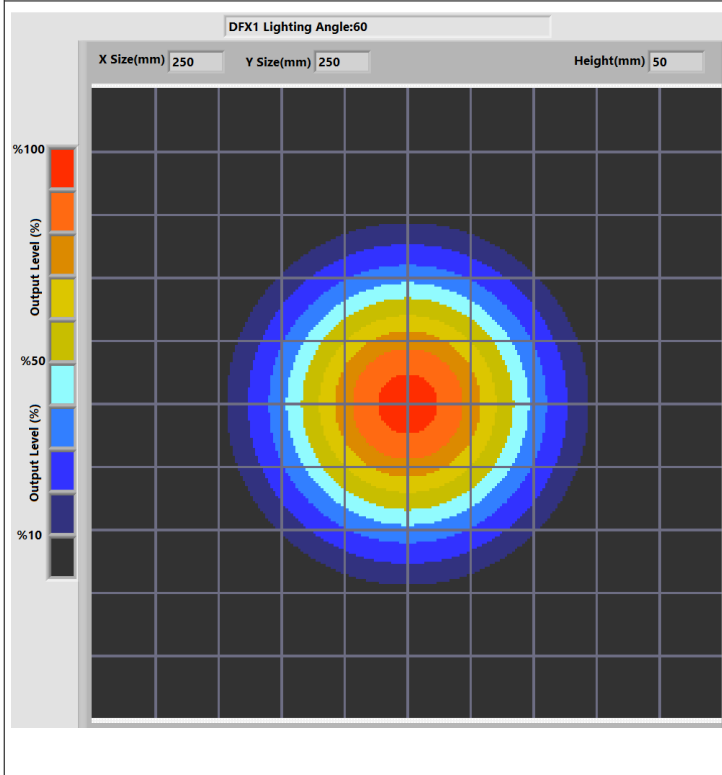
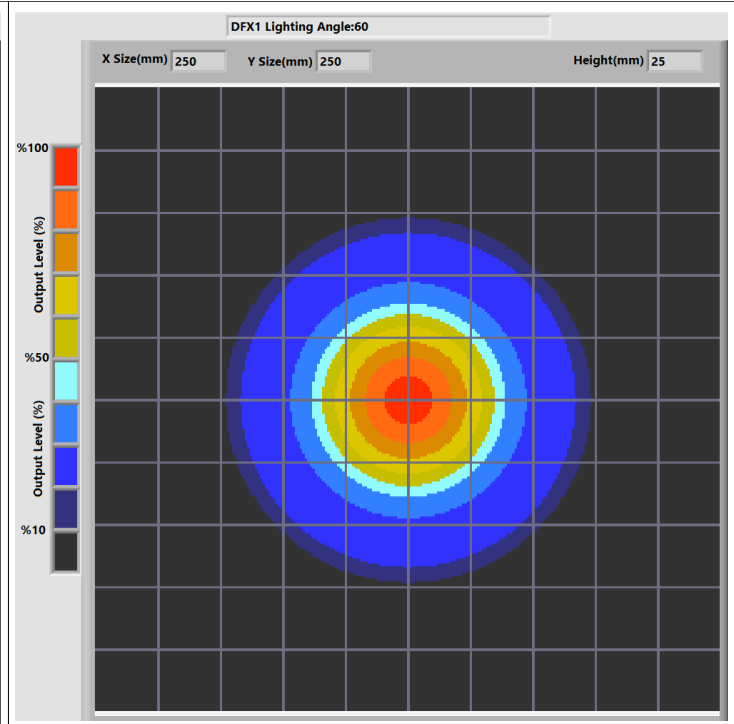
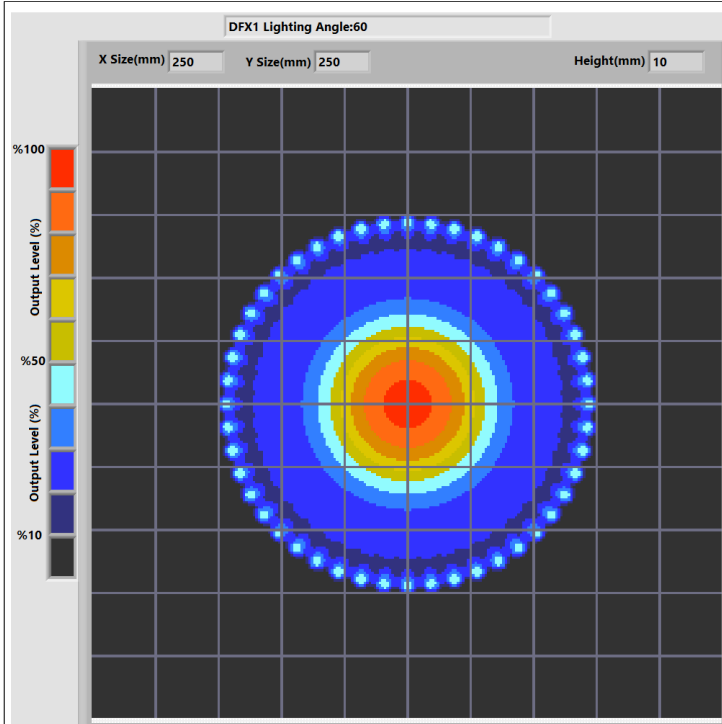
# Prion Industrial Lighting

## Dark Field Lights

### High Angle Lights

DFX1

#### 4.LIGHT CHARACTERISTICS



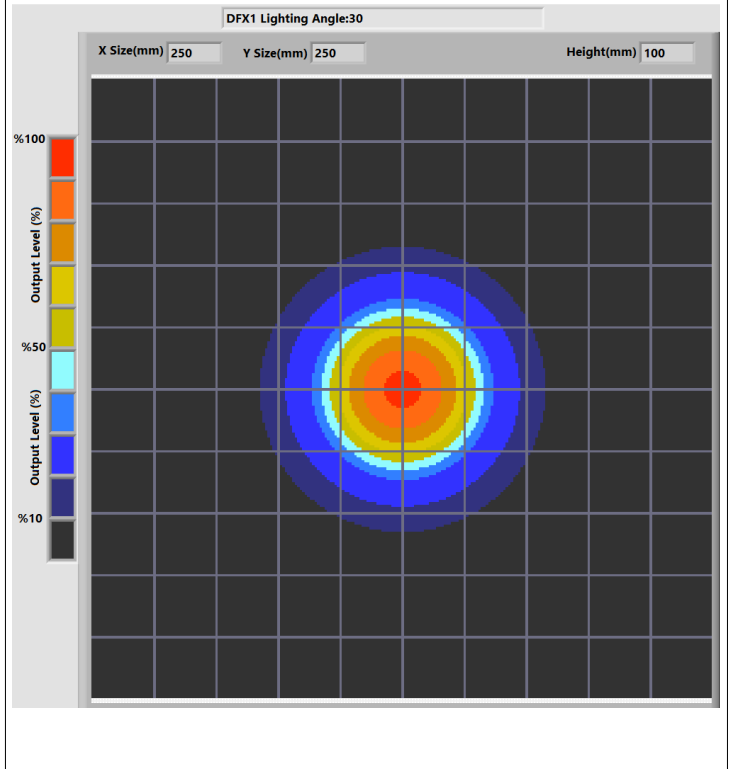
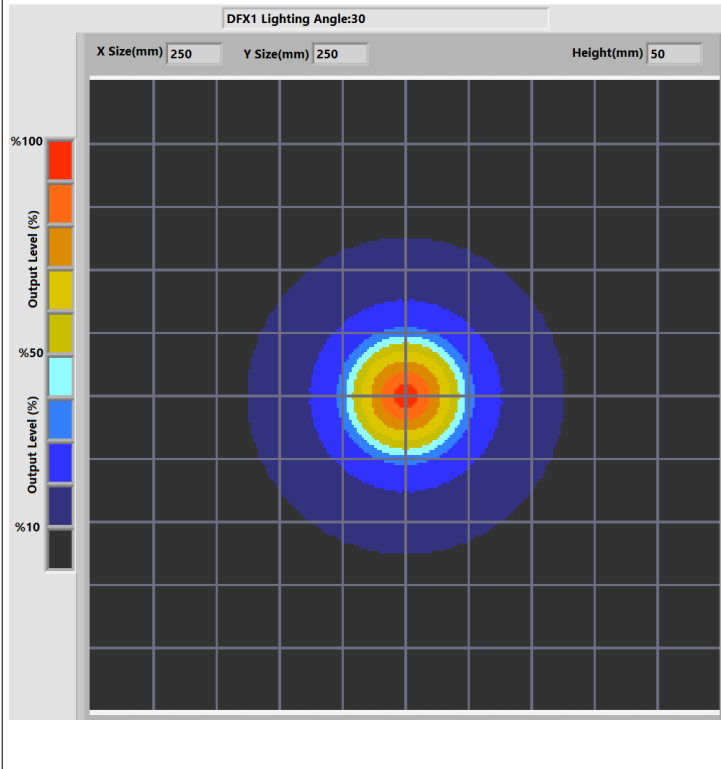
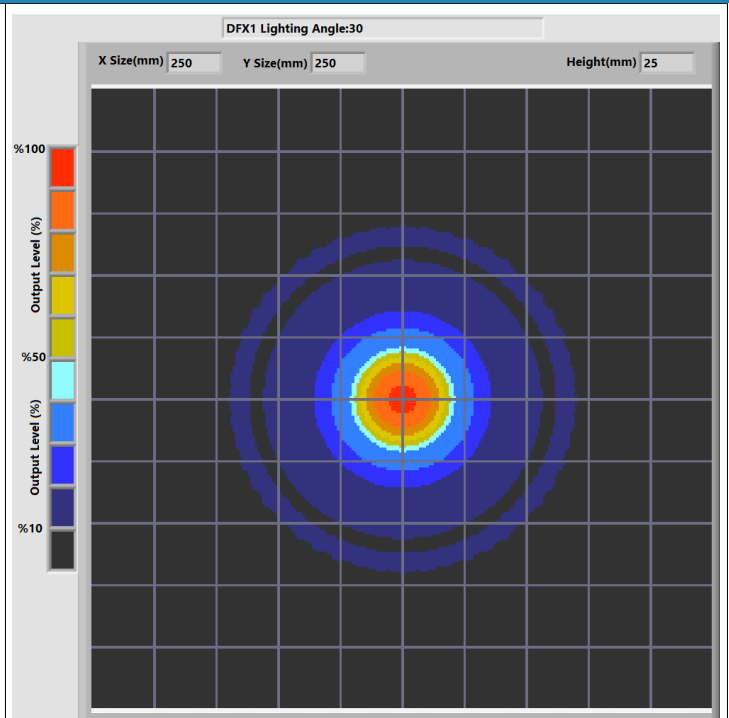
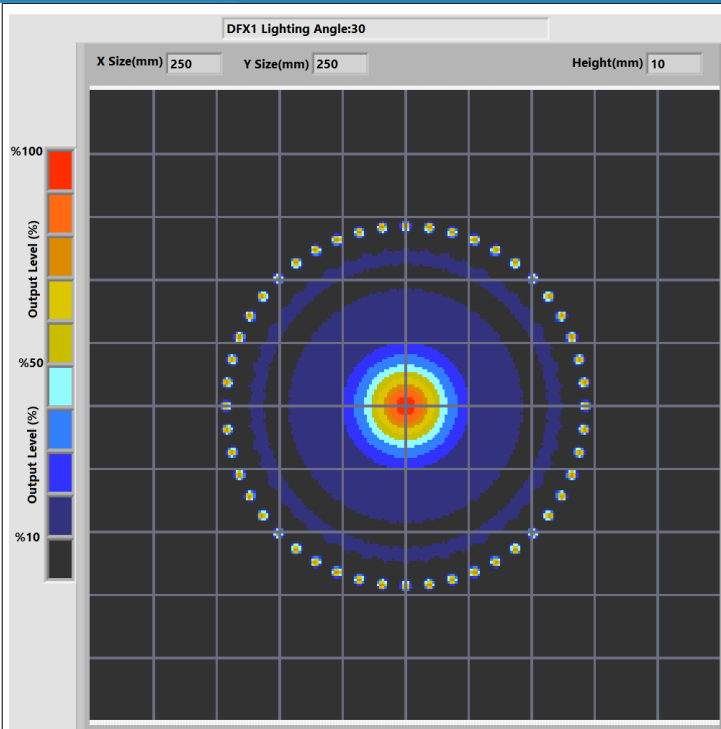


# Prion Industrial Lighting

## Dark Field Lights

### High Angle Lights

# DFX1



Dumlupınar Mahallesi, Pelin Sok. Nuhoğlu 2.  
Etap B Blok No:51 D16-19 Kadıköy / İstanbul

E-Mail: [info@ludre.com.tr](mailto:info@ludre.com.tr)  
Contact: +90 216 519 08 54

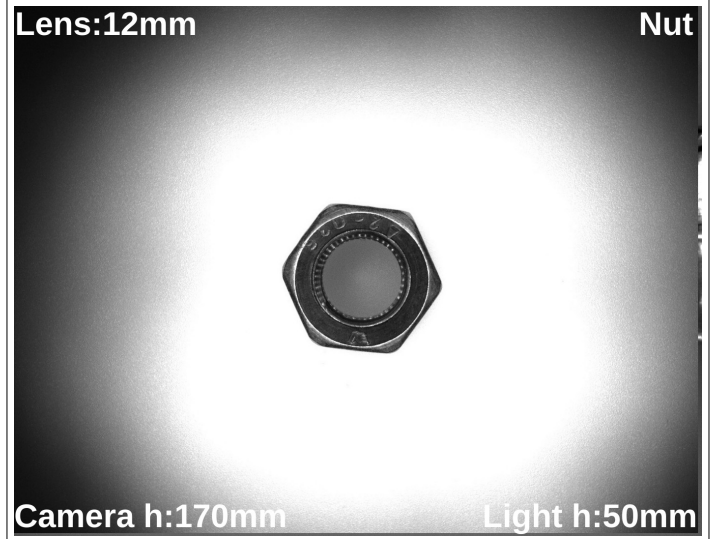
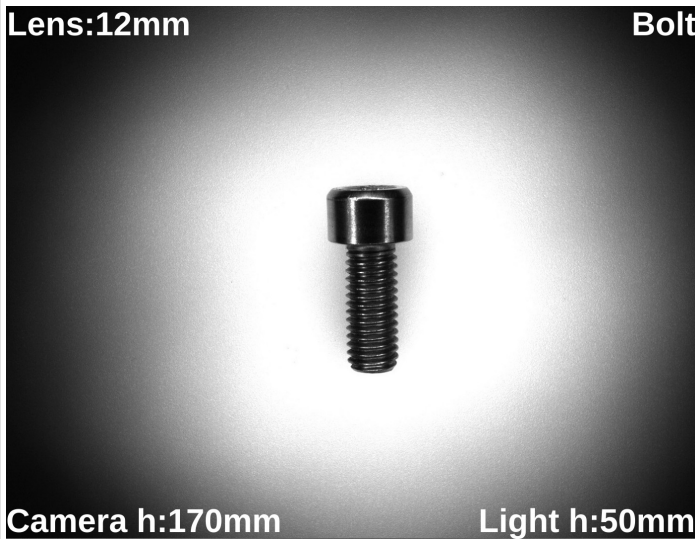
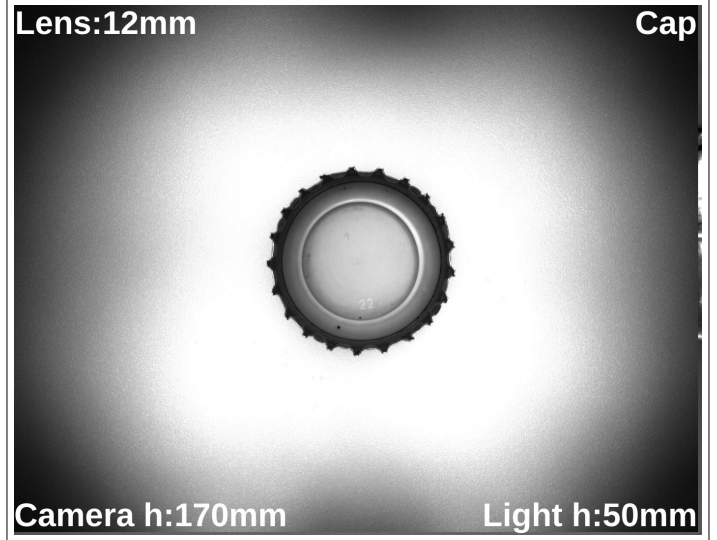
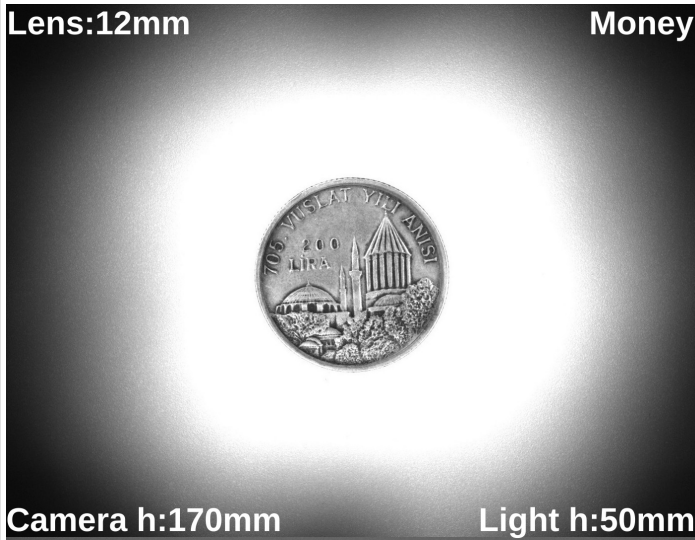


# Prion Industrial Lighting

Dark Field Lights

High Angle Lights

DFX1



Dumlupınar Mahallesi, Pelin Sok. Nuhoğlu 2.  
Etap B Blok No:51 D16-19 Kadıköy / İstanbul

E-Mail: [info@ludre.com.tr](mailto:info@ludre.com.tr)  
Contact: +90 216 519 08 54



# Prion Industrial Lighting

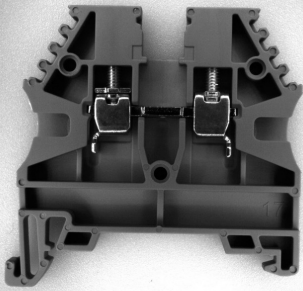
Dark Field Lights

High Angle Lights

DFX1

Lens:12mm

Terminal



Camera h:170mm

Light h:70mm

Lens:12mm

Can



Camera h:230mm

Light h:60mm

Lens:12mm

Cap



Camera h:230mm

Light h:70mm

Lens:12mm

Toy



Camera h:230mm

Light h:70mm



Dumlupınar Mahallesi, Pelin Sok. Nuhoğlu 2.  
Etap B Blok No:51 D16-19 Kadıköy / İstanbul

E-Mail: [info@ludre.com.tr](mailto:info@ludre.com.tr)  
Contact: +90 216 519 08 54

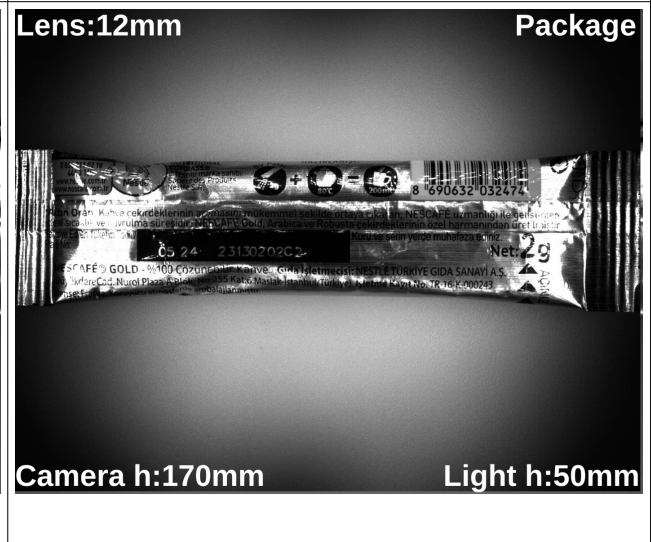
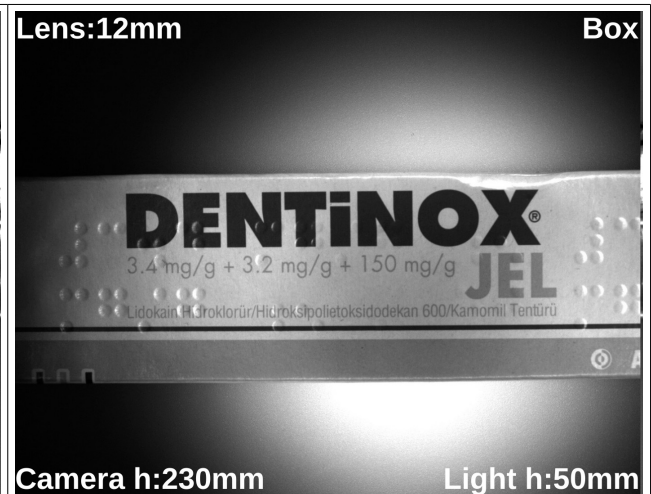
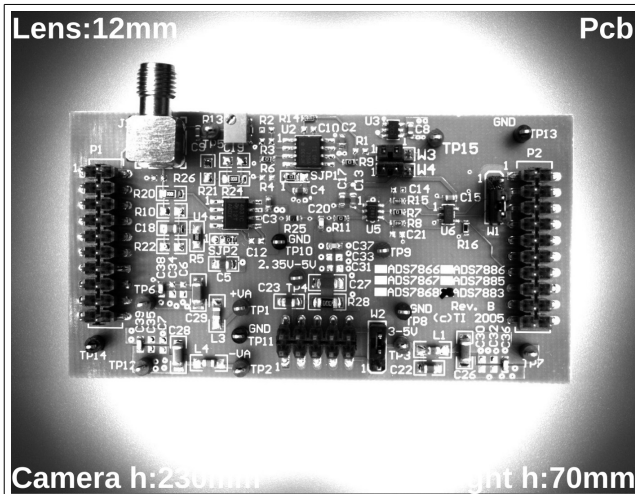


# Prion Industrial Lighting

## Dark Field Lights

### High Angle Lights

DFX1



Dumlupınar Mahallesi, Pelin Sok. Nuhoğlu 2.  
Etap B Blok No:51 D16-19 Kadıköy / İstanbul

E-Mail: [info@ludre.com.tr](mailto:info@ludre.com.tr)  
Contact: +90 216 519 08 54



# Prion Industrial Lighting

## Dark Field Lights

## High Angle Lights

DFX1

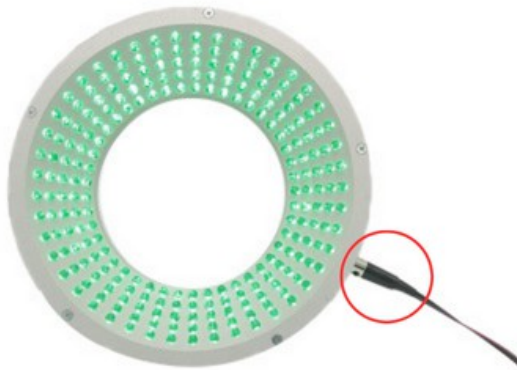
### 5.PRODUCT USE



Mounting to the machines is possible with the bolt and nut assembly in the areas indicated in the adjacent image.

The points to be taken into consideration during this installation are as follows: The electronic parts should not be contacted while assembling the product.

In addition, if the product is not installed properly, vibrations that may occur will cause errors during measurement and control.



The product is powered by a 2M long cable fixed on it.

We need to make the 24V DC+ connection from our cable line with a red stripe, and we need to make the GND connection from our single color cable line.

When the supplies are connected in reverse, the product will not be damaged, but the product will not work. Cuts, breaks, etc. on the cable. If there is a problem, please contact us before using the product.







# Prion Industrial Lighting

## Dark Field Lights

### High Angle Lights

DFX1

#### 6.DIMENSIONS

DFX1

