

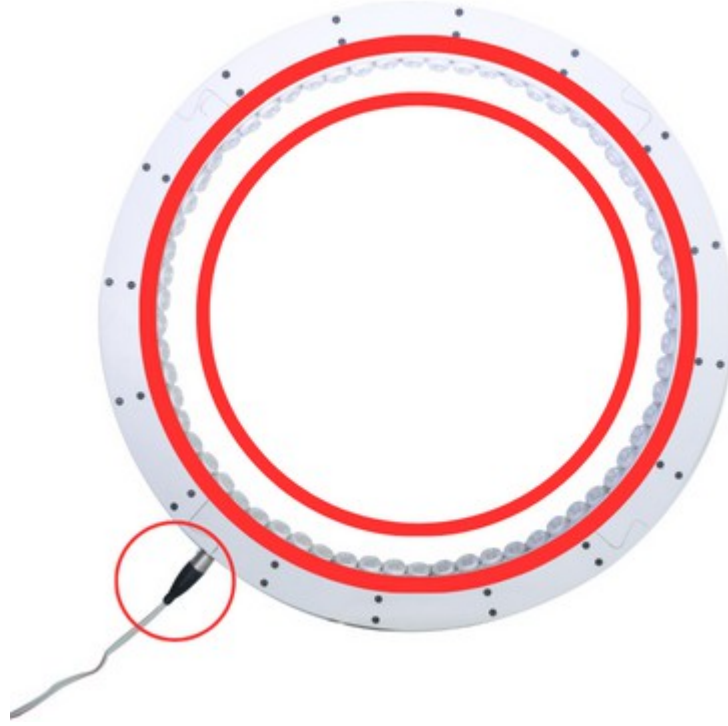


Prion Industrial Lighting

Low Angle Lights

Photometric Stereo Lights

DF300



Product Name	Dimensions	Number	Statement
DF300	Rmin:512mm	1	Camera Field of View
	Rmax:620mm	2	Lighting Zone
	Heigh: 42mm	3	Product Cable





Prion Industrial Lighting

Low Angle Lights

Photometric Stereo Lights

DF300

1.FEATURES

- Lighting Color: 4000K, 6000K
- Lighting Angle: 30°
- Intensity Of Illumination: 15,36 k lm
- Led Number: 64
- Input Voltage: 24 V
- Input Current (15 μ s): 32 Amp
- Input Current (1 second): 16 Amp
- Input Current (1 minute):8 Amp
- Input Current (continuous): 5,6 Amp
- Dimensions: Rmin=51,2 cm, Rmax=62 cm, h=4,2 cm
- At Constant Voltage Operation: None
- Diffusor Option: None

3.APPLICATIONS

- Engine Part Inspections
- Packaging Inspections
- Medical Bottle Inspections
- Food Package Inspections
- Surface Inspections
- Microscopic Camera Applications
- Particle Imaging in Liquid
- Particle Size Measurement
- Particle Counting
- Machine Vision
- Cell Identification
- Flame Length Measurement
- Edge Detection
- Material Strain Measurement (elongation / shortening / degradation)
- Motion Detection
- Product Counting
- Color Concentration Information
- Coordinate Information

2.DESCRPTIONS

- Dark Field light illuminations contain various options suitable for projects with different angles and color options.

- Particle Identification
- Cell Imaging
- Machine Monitoring
- Image Processing
- Industrial Led Lighting
- Conveyor Line Lighting
- Robot Vision Applications
- Industry 4.0 Applications
- Machine Lighting
- Bar Light
- Dark Field Light
- Panel Lighting
- Dark Effect Lighting
- Dome Light
- Ring Light
- Panel Light
- Back Light
- Dome Type
- Lighting





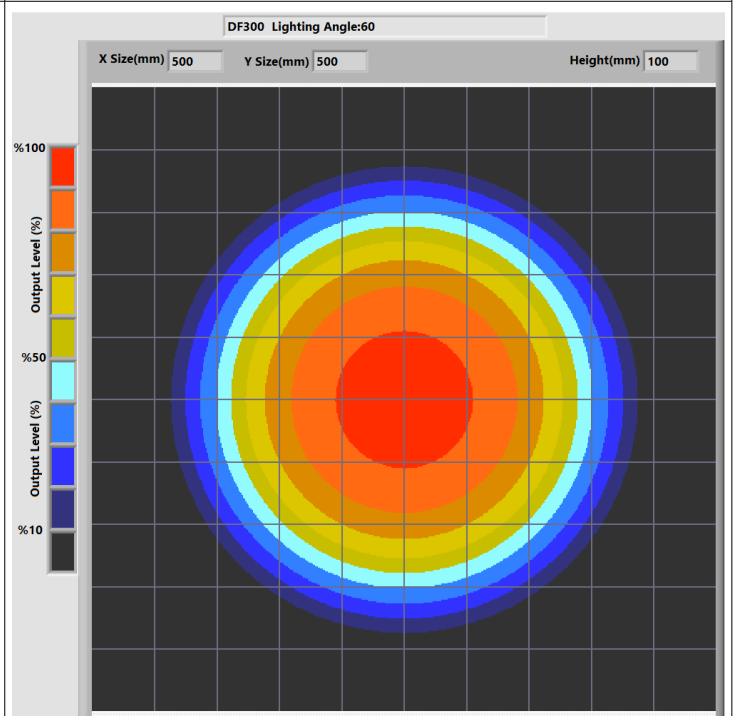
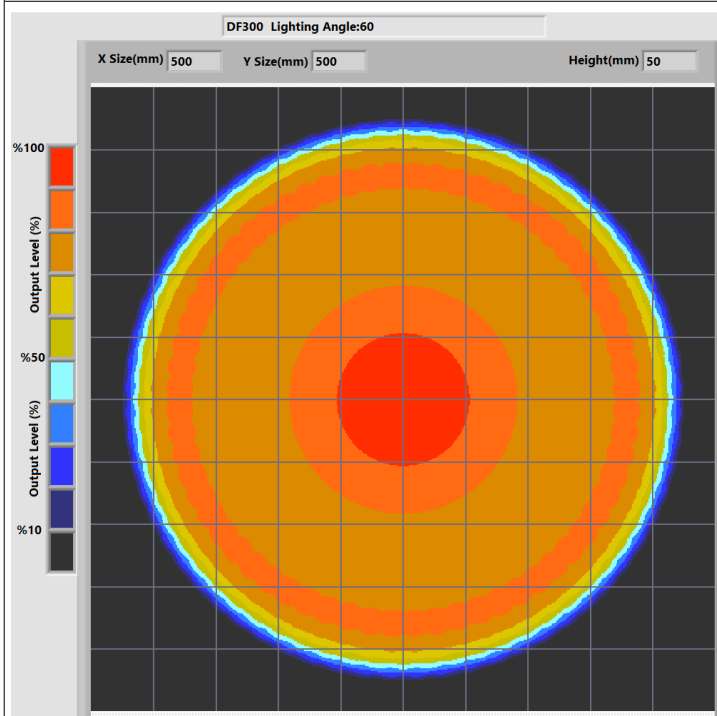
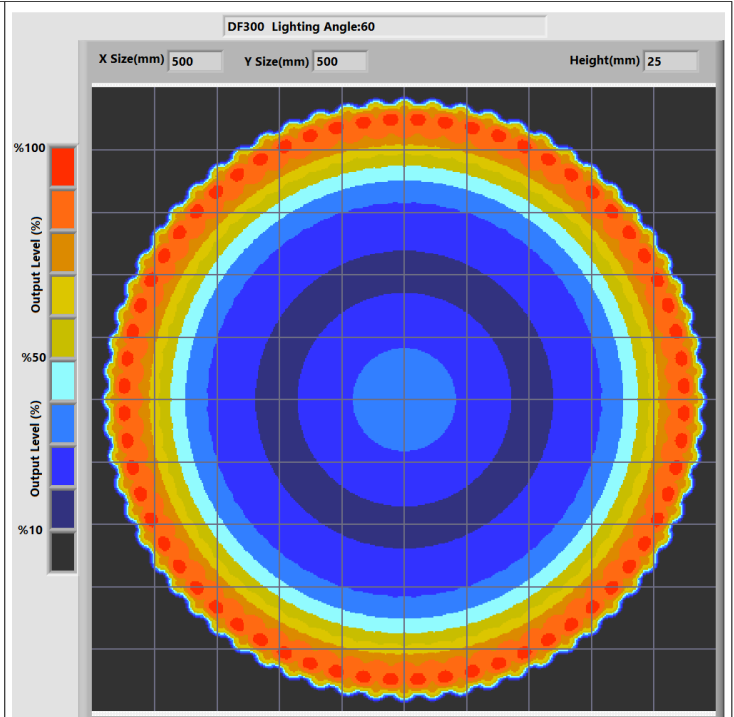
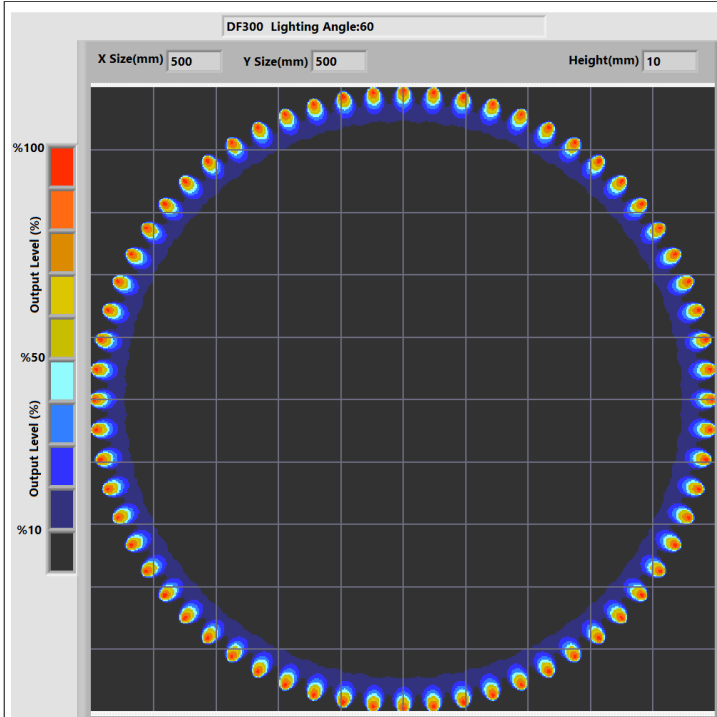
Prion Industrial Lighting

Low Angle Lights

Photometric Stereo Lights

DF300

4.LIGHT CHARACTERISTICS



Pelin Street, Nuhoğlu Stage 2
Kadıköy/İstanbul/Turkey

E-Mail: info@ludre.com.tr
Contact: +90 216 519 08 54

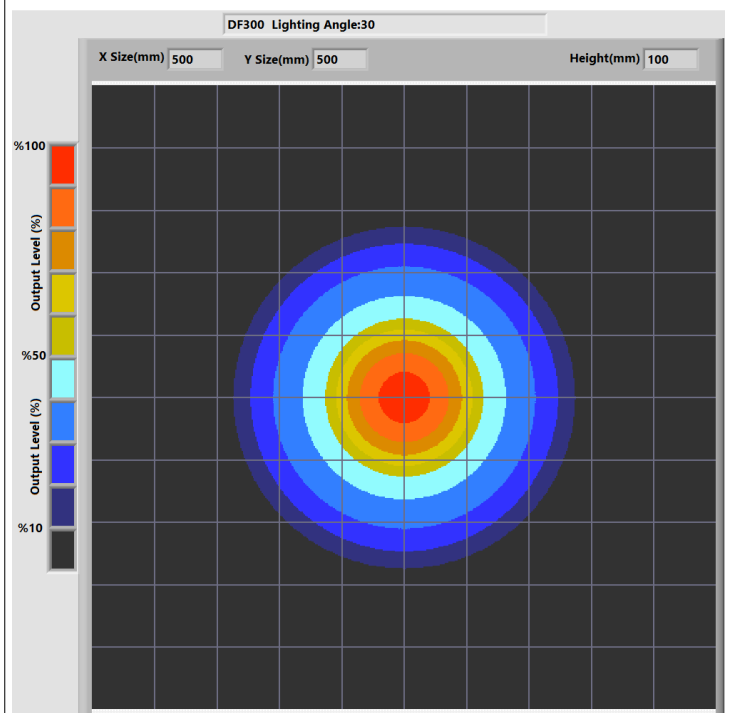
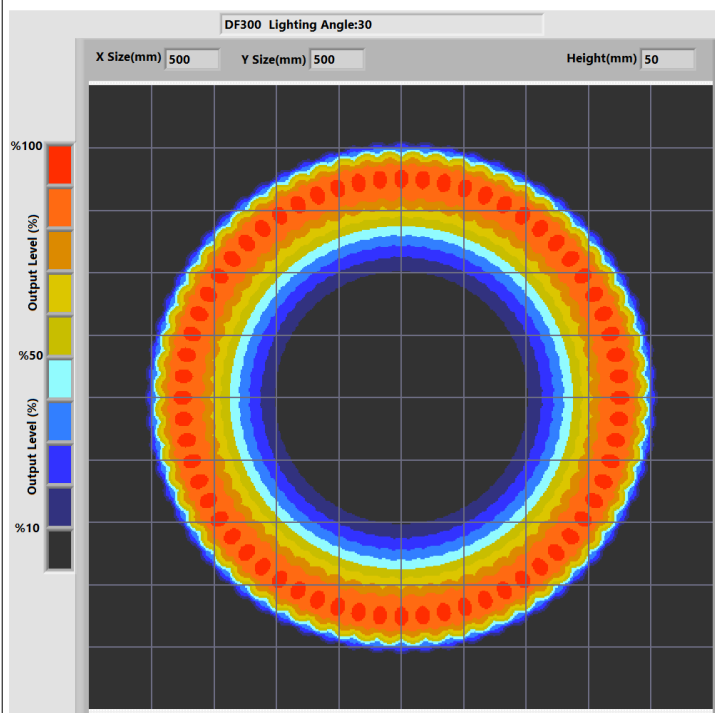
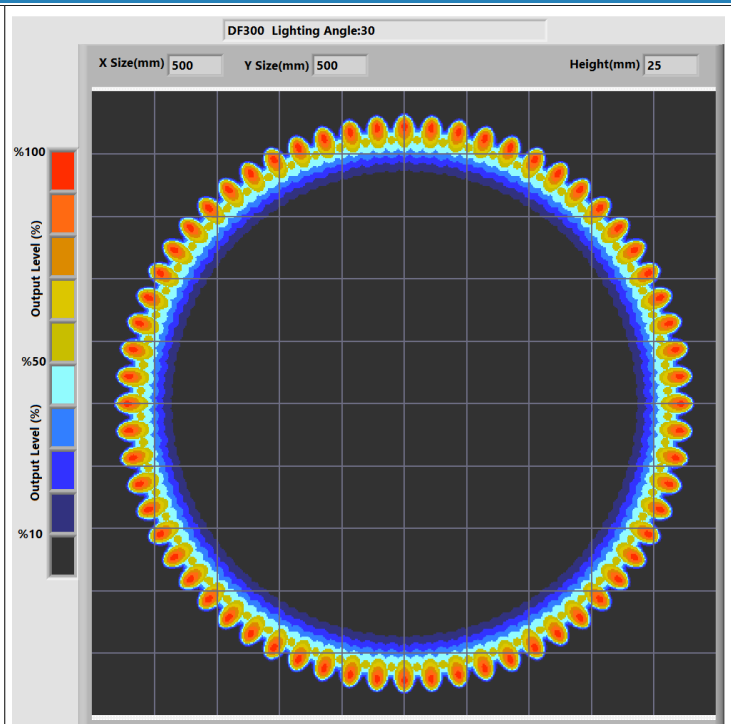
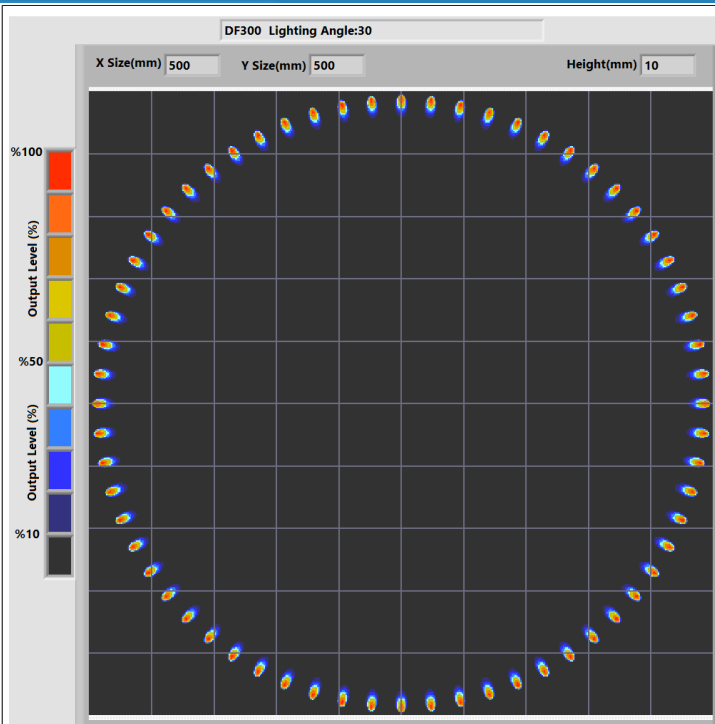


Prion Industrial Lighting

Low Angle Lights

Photometric Stereo Lights

DF300



Pelin Street, Nuhoğlu Stage 2
Kadıköy/İstanbul/Turkey

E-Mail: info@ludre.com.tr
Contact: +90 216 519 08 54



Prion Industrial Lighting

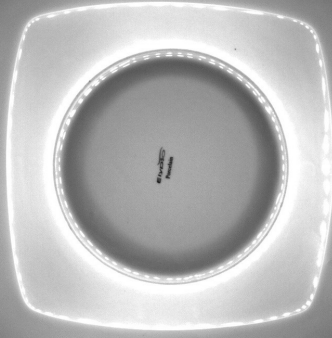
Low Angle Lights

Photometric Stereo Lights

DF300

Lens:12mm

Plate



Camera h:700mm

Light h:40mm

Lens:12mm

Plate

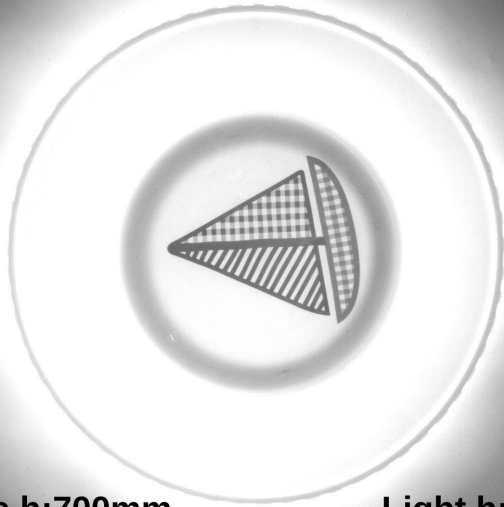


Camera h:700mm

Light h:50mm

Lens:12mm

Plate

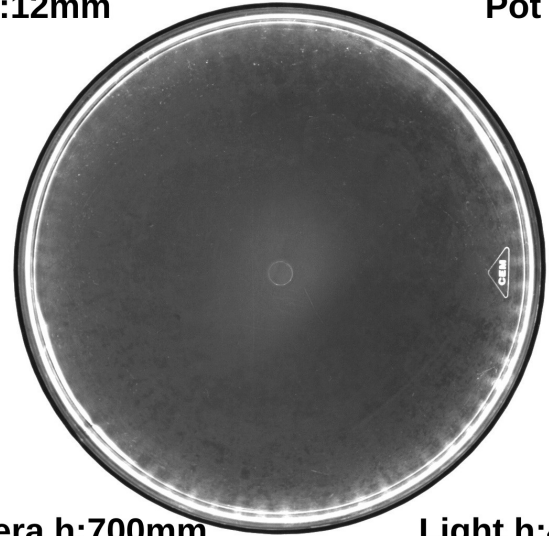


Camera h:700mm

Light h:60mm

Lens:12mm

Pot Cover



Camera h:700mm

Light h:40mm



Pelin Street, Nuhoglu Stage 2
Kadikoy/Istanbul/Turkey

E-Mail: info@ludre.com.tr
Contact: +90 216 519 08 54



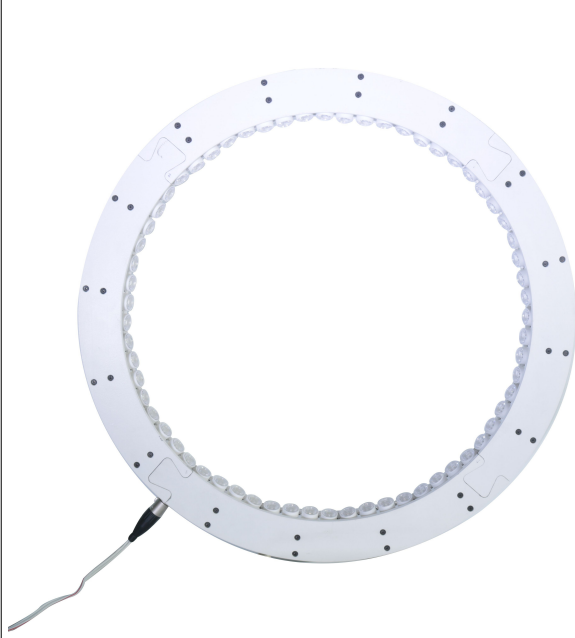
Prion Industrial Lighting

Low Angle Lights

Photometric Stereo Lights

DF300

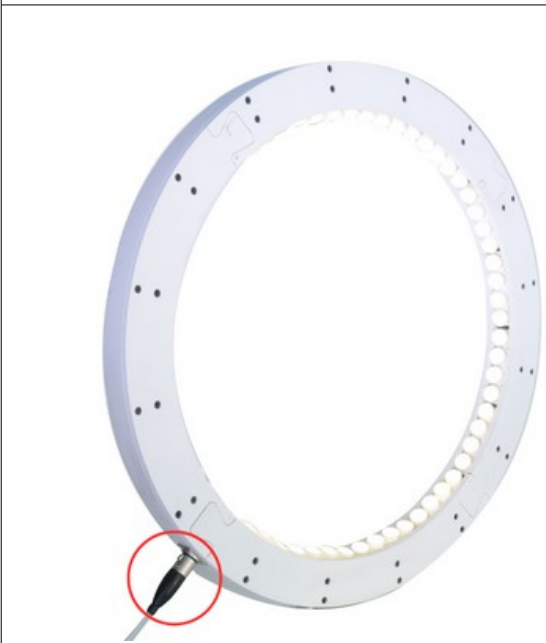
5.PRODUCT USE



Mounting to the machines is possible with the bolt and nut assembly in the areas indicated in the adjacent image.

The points to be taken into consideration during this installation are as follows: The electronic parts should not be contacted while assembling the product.

In addition, if the product is not installed properly, vibrations that may occur will cause errors during measurement and control.



The product is powered by a 2M long cable fixed on it.

We need to make the 24V DC+ connection from our cable line with a red stripe, and we need to make the GND connection from our single color cable line.

When the supplies are connected in reverse, the product will not be damaged, but the product will not work. Cuts, breaks, etc. on the cable. If there is a problem, please contact us before using the product.





Prion Industrial Lighting

Low Angle Lights

Photometric Stereo Lights

DF300

6.DIMENSIONS

DF300

